

**PIONEER POWER  
INTERNATIONAL**  
A WHOLE NEW DIMENSION IN QUALITY



ISO 9001:2008



**PRICE EFFECT  
FROM 1-04-2014**

**PPI**  
**PIONEER**

An ISO 9001:2008 Certified Company  
COMPANY YOU CAN TRUST

## COMPANY PROFILE

"PIONEER POWER INTERNATIONAL" is India's Largest Manufacturing of Cable Accessories for electrical supply and electrical contracting industries. We follow the ISO 9001:2008 registered quality approved system.

"PIONEER POWER INTERNATIONAL" was established in 2001 to manufacture and market compression terminal ends to both OEM users and wholesale outlets. Over the years the company has experienced a considerable growth rate.

The company's new factory in Mira Road, Thane is launched to support the every growing demand of our customers. The whole process right from procurement of best quality raw material to tin plating of terminals is done under strict quality control conditions. It also houses a design and tooling room and a fully equipped testing laboratory.

Headquartered in Mumbai, "Pioneer Power International" operates all over India. We also have a strong presence in Dubai, U.K, Muscat, South Africa, Saudi Arabia, Singapore and through our agents and associates.

# PPI PIONEER®

An ISO 9001:2008 Certified Company



**QUALITY POLICY:** We at M/s Pioneer Power International are committed to provide products & services of the highest quality. In all activities we will pursue quality leadership with goals aimed at achieving defect free results fully meet needs & expectation of its customers. A dedicated effort makes best quality and we are committed to adhere.

"Pioneer Power International" has set strict standard for itself, which we maintains without any compromises.

### OUR FOCUS IS ON FOLLOWING AREAS:

- Knowing the customer's needs
- Effective planning
- Ensuring optimum performance
- Clear procedure manual
- Timely delivery
- Efficient after sales service
- Analysis of valuable customer feedback & effective action on them
- Value for money.

### STOCK AVAILABILITY:

Our storage system's ensure availability of the complete range of products and it's prompt dispatch. in committed time.

### TEST FACILITIES:

Our engineers utilize the various in-house testing facility & external lab reports to ensure integrity and performance of every products that rolls out of our plant.

### TOOL ROOM AND CALIBRATION:

We have facilities for making tools & dies for manufacturing of our products. Our fully trained technicians continuously monitor and check on tooling with "go & no-go gauge" tolerancing. All equipments are calibrated at regular intervals by registered bodies.

### STATEMENT OF COMMITMENT OF BEST PRODUCT QUALITY & SERVICES OF "PIONEER POWER INTERNATIONAL"

In all phases of its activities, from products to services, "Pioneer Power International" keeps searching for best quality. Our products are technologically evolved, reliable safe & in compliance with international standards, this has made the 'Pioneer Power International' range of products synonymous with electrical products & accessories in the international markets of the middle East, South Asia, Australia U.K., U.S.A. and South Africa.

"Pioneer Power International" enjoys a close working relationship with all its wholesalers and distributor, with an extensive network of dealers and distributors world wide, you'll never be away from a "Pioneer Power International" stockiest.

"Pioneer Power International" ensure the best of advice from its trained staff, backed up with fast product availability. A Pioneer Power International customer can always count on a highly structures commercial organization that provides the most complete and advance. Pre & post sales service. All this has resulted in "Pioneer Power International", being the best in its fields to be awarded the ISO 9001 : 2008 Certificate benchmark for quality. We hope you will join those who have discovered "Pioneer Power International's" outstanding record and it's commitment to the value of quality & professional service.



## INFRASTRUCTURE




## CERTIFICATION




01  
  
 COPPER TUBULAR TERMINALS LIGHT DUTY) PCT


02  
  
 COPPER REDUCER TYPE TERMINALS (PCR)


03  
  
 COPPER INLINE CONNECTOR (PC)

03  
  
 COPPER INLINE CONNECTOR (PC XLPE CABLES EXPORT)

04  
  
 COPPER TUBULAR TERMINAL ENDS XLPE (PCT XLPE)

05  
  
 COPPER TUBULAR HEAVY DUTY LONG BARREL (PCT LB)

05  
  
 COPPER TUBULAR (DOUBLE HOLE) PCTDH TYPE I

06  
  
 COPPER TUBULAR (DOUBLE HOLE) PCTDH TYPE II

06  
  
 COPPER TUBULAR XLPE (DOUBLE HOLE) PCTDH EXPORT

07  
  
 COPPER TUBULAR TERMINAL ENDS (PCT ICF)

08  
  
 SOLDERING TYPE COPPER TERMINAL ENDS (PSC)

08  
  
 WEAK BACK TYPE SOLD-ERING FERRULES (PWB)

09  
  
 ALUMINIUM TUBULAR TERMINALS (PAS)


10  
  
 ALUMINIUM IN LINE CONNECTOR (PAC)

10  
  
 ALUMINIUM IN LINE CONNE-CTORS XLPE (PAC XLPE)

11  
  
 ALUMINIUM REDUCER TERMINALS (PAR)

12  
  
 ALUMINIUM TUBULAR XLPE (PAS XLPE)

12  
  
 ALUMINIUM TUBE TWO HOES (PAS DH)

12  
  
 INSULATED IN-LINE CONNECTORS

13  
  
 ALUMINIUM TUBE LONG BARREL (PAS LB)


14  
  
 SNAP ON TERMINALS (PSNP)


15-16  
  
 COPPER RING TONGUE TERMINAL (PR)

17  
  
 COPPER RING TONGUE INSULATED (PRI)


18  
  
 COPPER RING TONGUE REINFORCED (PRR)

19  
  
 COPPER FORK TYPE (PF)

19  
  
 COPPER FORK TYPE INSULATED (PFI)

19  
  
 COPPER FORK TYPE REINFORCED (PFR)

20  
  
 COPPER PIN TYPE TERMINALS (PP)

20  
  
 COPPER PIN TYPE INSULATED (PPI)


20  
  
 COPPER PIN TYPE REINFORCED (PPR)


21  
  
 COPPER RING TONGUE FORK "U" CUT (PRFU)


21  
  
 COPPER RING TONGUE FORK ENDS "U" CUT INSULATED (PRFUI)

22  
  
 COPPER RING TONGUE FORK "U" CUT INSULATED with REINFORCED (PRFUR)

22  
  
 OPEN-CLOSE TYPE SOLDERING CABLE ENDS (POC)

23  
  
 COPPER FORK HOOK TERMINAL ENDS (PFH)

23  
  
 COPPER FORK HOOK ENDS INSULATED (PFHI)

24  
  
 COPPER FORK HOOK REINFORCED (PFHR)

24  
  
 TWIN CORD END TERMINALS (PTW)

25  
  
 COPPER END SEALING FERRULES (PSF)

25-26  
  
 COPPER INSULATED FERRULES (PSFI)

27  
  
 CORROSION INHIBITING COMPOUND FOR ELEC. JOINTS (PGTZ-8785)

27  
  
 REVERSE / FORWARD SWITCH

COPPER TUBULAR  
TERMINALS  
(LIGHT DUTY)  
PCT



MM <sup>2</sup>	CAT NO	STANDING PACKING	RATE PER PCS.
2.5-5.2	PCT-05	1000	4.11
4-6.5	PCT-06	1000	5.74
6-6.5	PCT-07	1000	6.26
10-6.5	PCT-08	500	7.89
16-6.5	PCT-09	500	10.39
25-6.5	PCT-10	200	17.54
35-6.5	PCT-11	200	19.02
35-8.2	PCT-12	200	19.02
50-6.5	PCT-13	200	25.03
50-8.2	PCT-14	200	25.03
50-10.2	PCT-15	200	25.03
70-8.2	PCT-16	200	41.12
70-10.2	PCT-17	200	41.12
70-12.7	PCT-18	200	41.12
95-10.2	PCT-19	200	57.14
95-12.7	PCT-20	100	57.14
120-10.2	PCT-21	100	76.25
120-12.7	PCT-22	100	76.25
120-16.2	PCT-23	100	76.25
150-10.2	PCT-24	40	107.70
150-12.7	PCT-25	40	107.70
150-16.2	PCT-26	40	107.70
185-12.7	PCT-27	40	158.73
185-16.2	PCT-28	40	158.73
225-16.2	PCT-231	40	197.97
240-16.2	PCT-29	40	223.42
240-20.3	PCT-30	40	223.42

MM <sup>2</sup>	CAT NO	STANDING PACKING	RATE PER PCS.
300-16.2	PCT-31	40	305.51
300-20.3	PCT-32	40	305.51
400-20.3	PCT-33	40	462.48
500-20.3	PCT-34	20	628.19
630-20.3	PCT-35	20	878.37
800	PCT-062	10	1,397.38
1000	PCT-76	10	2,641.81



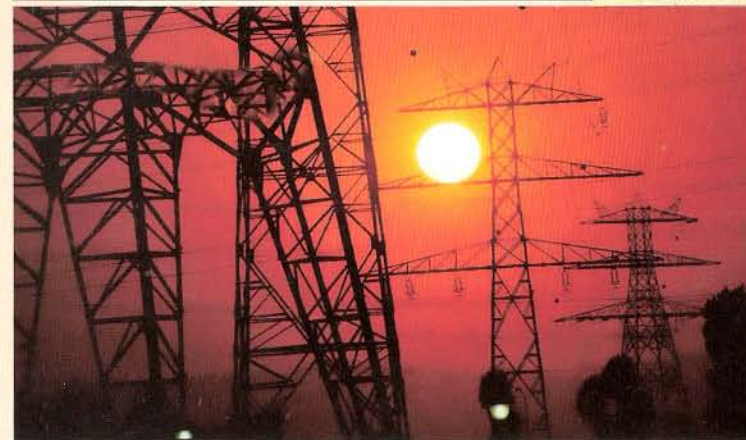
PPI  
PIONEER®

COPPER REDUCER  
TYPE TERMINALS  
(PCR)



MM <sup>2</sup>	CAT NO	STANDING PACKING	RATE PER PCS.
2.5	PCR-1	1000	11.95
2.5	PCR-7	1000	10.84
4	PCR-15	1000	11.95
4	PCR-16	1000	10.84
6	PCR-17	1000	12.63
6	PCR-18	1000	10.84
10	PCR-19	1000	14.91
10	PCR-20	500	13.57
10	PCR-21	500	16.96
10	PCR-22	500	15.36
16	PCR-23	500	29.38
16	PCR-24	500	29.38
16	PCR-2	500	21.25
25	PCR-25	200	33.65
25	PCR-3	200	45.18
35	PCR-4	200	44.50
50	PCR-26	100	49.93
50	PCR-5	100	85.05
70	PCR-27	100	76.60
70	PCR-6	100	97.58
70	PCR-28	100	117.28
95	PCR-29	100	112.00
95	PCR-8	100	156.76
95	PCR-31	100	102.98
95	PCR-32	100	165.35
120	PCR-33	100	136.64
120	PCR-34	100	135.52

MM <sup>2</sup>	CAT NO	STANDING PACKING	RATE PER PCS.
120	PCR-35	100	156.76
120	PCR-36	100	211.43
150	PCR-10	50	247.35
150	PCR-37	50	191.99
185	PCR-30	50	315.77
185	PCR-38	50	252.79
225	PCR-39	50	414.30
225	PCR-46	50	596.19
225	PCR-42	50	525.82
240	PCR-44	25	542.11
240	PCR-43	25	396.39
300	PCR-45	25	502.10
300	PCR-47	10	536.67
400	PCR-101	10	1,135.24



**PIONEER**  
PPI

COPPER INLINE  
CONNECTOR  
(PC)

COPPER INLINE  
CONNECTOR  
(PC XLPE CABLES  
EXPORT)



PPI  
PIONEER

MM <sup>2</sup>	CAT NO	STANDING PACKING	RATE PER PCS.
1.5	PC-450	2000	3.97
1.5	PC-453	2000	2.15
2.5	PC-451	2000	4.24
2.5	PC-454	2000	2.48
4	PC-3	1000	4.99
4-6	PC-452	1000	5.91
4-6	PC-455	1000	4.16
6	PC-4	1000	4.73
10	PC-460	1000	9.09
16	PC-6	200	7.42
16	PC-461	200	20.91
25	PC-24	200	17.77
35	PC-25	100	24.18
50	PC-26	100	36.35
70	PC-51	50	61.59
95	PC-52	50	80.83
120	PC-53	50	95.94
150	PC-54	50	137.03
185	PC-55	50	187.78
240	PC-56	50	287.38
300	PC-57	20	408.80
400	PC-58	20	601.81
500	PC-59	20	879.30
630	PC-61	20	1,206.14
800	PC-42	10	2,192.87
1000	PC-43	10	3,263.12

MM <sup>2</sup>	CAT NO	STANDING PACKING	RATE PER PCS.
1.5	PC-1.5	2000	7.72
2.5	PC-2.5	2000	7.29
4	PC-4	2000	10.40
6	PC-6	2000	9.99
10	PC-10	1000	16.94
16	PC-16	1000	15.61
25	PC-25	500	37.34
35	PC-35	500	48.15
50	PC-50	200	74.32
70	PC-70	200	109.47
95	PC-95	200	151.11
120	PC-120	100	211.99
150	PC-150	100	270.97
185	PC-185	100	334.08
240	PC-240	50	489.69
300	PC-300	50	739.73
400	PC-400	40	1,125.10
500	PC-500	40	1,458.45
550	PC-550	20	1,102.56
630	PC-630	20	2,010.58
800	PC-800	20	3,146.15
1000	PC-1000	20	4,687.96

**COPPER TUBULAR  
TERMINAL  
ENDS XLPE  
(PCT XLPE)**



MM <sup>2</sup>	CAT NO	STANDING PACKING	RATE PER PCS.
1.5-5.2	PCT-538	1000	5.81
1.5-6.5	PCT-539	1000	6.06
2.5-4.2	PCT-388	1000	6.06
2.5-5.2	PCT-540	1000	6.27
2.5-6.5	PCT-541	1000	6.27
4-5.2	PCT-389	1000	7.29
4-6.5	PCT-543	1000	7.29
6-5.2	PCT-390	1000	8.55
6-6.5	PCT-544	1000	9.39
6-8.4	PCT-545	1000	9.39
10-6.5	PCT-353	500	9.82
10-8.4	PCT-547	500	10.45
16-6.5	PCT-354	500	12.07
16-8.4	PCT-549	500	13.37
20-8.4	PCT-550	500	14.18
25-6.5	PCT-355	200	17.94
25-8.4	PCT-551	200	20.45
25-10.5	PCT-552	200	20.45
35-6.5	PCT-542	200	25.89
35-8.4	PCT-356	200	25.64
35-10.5	PCT-554	200	26.66
50-8.4	PCT-357	200	42.59
50-10.5	PCT-556	200	42.59
70-8.4	PCT-557	100	66.72
70-10.5	PCT-358	100	64.47
70-13.0	PCT-559	100	64.47
95-10.5	PCT-359	100	93.85

MM <sup>2</sup>	CAT NO	STANDING PACKING	RATE PER PCS.
95-13.0	PCT-561	100	93.85
120-13.0	PCT-241	50	123.22
120-17.0	PCT-546	50	123.22
150-13.0	PCT-242	50	160.15
150-17.0	PCT-564	50	161.03
185-17.0	PCT-243	50	210.20
240-17.0	PCT-244	40	310.30
240-21.0	PCT-567	40	310.30
300-17.0	PCT-245	40	452.98
300-21.0	PCT-569	40	452.98
400-17.0	PCT-246	20	700.71
400-21.0	PCT-571	20	700.71
500-17.0	PCT-247	20	955.47
500-21.0	PCT-596	20	1,012.66
550-21.0	PCT-573	20	1,169.94
630-21.0	PCT-248	20	1,433.91
.....	PCT-599	20	2,412.62
.....	PCT-590	20	3,563.79

**PIONEER**<sup>®</sup>  
**PPI**

COPPER TUBULAR  
TERMINAL ENDS  
HEAVY DUTY  
LONG BARREL  
(PCT LB)



COPPER TUBULAR  
TERMINALS ENDS  
(DOUBLE HOLE)  
PCTDH  
TYPE I



MM <sup>2</sup>	CAT NO	STANDING PACKING	RATE PER PCS.
25-8.2	PCT-282	200	20.32
35-8.2	PCT-283	200	32.23
50-8.2	PCT-284	100	53.10
70-10.2	PCT-285	100	81.47
95-12.7	PCT-286	50	128.46
120-12.7	PCT-287	50	178.19
150-12.7	PCT-288	40	220.25
185-12.7	PCT-289	40	319.26
240-16.2	PCT-290	30	447.97
300-16.2	PCT-291	30	572.85
400-20	PCT-292	20	884.02
500-21	PCT-293	10	1,551.15
630-21	PCT-294	10	2,132.43

MM <sup>2</sup>	CAT NO	STANDING PACKING	RATE PER PCS.
133	PCTDH-36	30	253.47
133	PCTDH-37	30	252.79
133	PCTDH-38	30	207.78
133	PCTDH-39	30	212.11
133	PCTDH-40	30	253.47
133	PCTDH-41	30	222.31
133	PCTDH-47	30	245.29
133	PCTDH-51	30	346.98
270	PCTDH-42	20	509.56
270	PCTDH-43	20	531.26
270	PCTDH-44	20	536.67
270	PCTDH-48	20	531.26
270	PCTDH-49	20	569.19
400	PCTDH-45	10	796.86
400	PCTDH-56	10	802.32
400	PCTDH-50	10	937.83

PPI  
PIONEER<sup>®</sup>



COPPER TUBULAR  
TERMINALS ENDS  
(DOUBLE HOLE)  
PCTDH  
TYPE II



COPPER TUBULAR  
TERMINALS ENDS  
FOR XLPE CABLE  
(DOUBLE HOLE)  
PCTDH EXPORT



MM <sup>2</sup>	CAT NO	STANDING PACKING	RATE PER PCS.
3	PCTDH-65	1000	6.02
3	PCTDH-66	1000	6.02
3	PCTDH-67	1000	6.02
3	PCTDH-209	1000	6.29
3	PCTDH-210	1000	6.29
3	PCTDH-211	1000	16.30
10	PCTDH-68	500	22.03
10	PCTDH-69	500	22.03
10	PCTDH-228	500	21.64
25	PCTDH-212	200	29.83
25	PCTDH-56	200	30.98
35	PCTDH-187	200	51.02
50	PCTDH-87	100	72.58
50	PCTDH-230	100	75.00
70	PCTDH-229	100	111.82
120	PCTDH-55	50	260.98
120	PCTDH-70	50	250.18
150	PCTDH-54	50	324.74
225	PCTDH-213	20	432.79
225	PCTDH-214	20	518.85
225	PCTDH-71	20	420.66
270	PCTDH-215	20	625.21
475	PCTDH-73	10	1,350.31
475	PCTDH-74	10	1,382.34
475	PCTDH-75	10	1,350.31

MM <sup>2</sup>	CAT NO	STANDING PACKING	RATE PER PCS.
95-10	PCTDH-20	50	221.24
95-12	PCTDH-21	50	216.58
120-10	PCTDH-22	40	262.92
120-12	PCTDH-23	40	254.54
150-10	PCTDH-24	40	322.54
150-12	PCTDH-25	40	317.88
185-12	PCTDH-26	30	378.43
185-16	PCTDH-27	30	374.60
240-12	PCTDH-28	20	540.05
240-16	PCTDH-29	20	534.46
300-12	PCTDH-30	20	555.42
300-16	PCTDH-31	20	781.31
400-12	PCTDH-32	10	1,523.92
400-16	PCTDH-33	10	1,513.69
400-14	PCTDH-34	10	1,616.04



**PIONEER**  
PPI

COPPER TUBULAR  
TERMINAL ENDS  
(PCT ICF)



MM <sup>2</sup>	CAT NO	STANDING PACKING	RATE PER PCS.
11-17/5	PCT-106	500	21.64
11-17/6	PCT-145	500	21.64
11/17/8	PCT-146	500	21.64
11-17/10	PCT-109	500	22.83
17-23/5	PCT-107	200	36.33
17-23/6	PCT-147	200	36.33
17-23/8	PCT-148	200	36.33
17-23/10	PCT-108	200	38.62
23-29/5	PCT-110	200	54.20
23-29/6	PCT-149	200	49.67
23-29/8	PCT-150	200	49.68
23-29/10	PCT-151	200	52.15
23-29/13	PCT-111	200	49.89
29-45/5	PCT-116	100	70.51
29-45/6	PCT-152	100	70.51
29-45/8	PCT-153	100	70.51
29-45/10	PCT-154	100	70.51
29-45/13	PCT-113	100	70.51
45-57/6	PCT-112	50	117.28
45-57/8	PCT-155	50	117.28
45-57/10	PCT-156	50	117.28
45-57/13	PCT-157	50	117.28
57-75/6	PCT-114	50	148.62
57-75/8	PCT-158	50	148.62
57-75/10	PCT-159	50	148.62
57-75/13	PCT-160	50	148.62
57-90/6	PCT-137	40	164.41

MM <sup>2</sup>	CAT NO	STANDING PACKING	RATE PER PCS.
75-90/8	PCT-161	40	164.41
75-90/10	PCT-162	40	164.41
75-90/13	PCT-163	40	164.41
90-110/6	PCT-115	20	199.74
90-110/8	PCT-164	20	199.74
90-110/10	PCT-165	20	199.74
90-110/13	PCT-166	20	199.74
110-145/8	PCT-138	20	294.58
110-146/10	PCT-167	20	294.58
110-146/13	PCT-168	20	294.58
110-146/17	PCT-169	20	294.58



**SOLDERING TYPE  
COPPER  
TERMINAL ENDS  
(PSC)**



MM <sup>2</sup>	CAT NO	STANDING PACKING	RATE PER PCS.
15A-3.2	PSC-201	200	4.39
30A-5.1	PSC-202	200	6.29
60A-6.4	PSC-203	200	15.81
100A-9.5	PSC-204	100	31.61
150A-9.5	PSC-205	100	53.30
200A-12.7	PSC-206	100	83.57
300A-12.7	PSC-207	50	159.89
400A-15.9	PSC-208	50	192.41
500A-19.0	PSC-209	40	260.21
600A-19.0	PSC-210	20	401.39
800A-23.8	PSC-211	20	732.75
1000A-23.8	PSC-212	20	1,084.21
1000mm <sup>2</sup>	PSC-295	20	1,907.29



**WEAK BACK  
TYPE SOLDERING  
FERRULES  
(PWB)**



MM <sup>2</sup>	CAT NO	STANDING PACKING	RATE PER PCS.
6	PWB-279	2000	14.75
10	PWB-280	2000	18.92
16	PWB-281	2000	22.81
25	PWB-282	1000	29.45
35	PWB-283	1000	41.24
50	PWB-284	1000	52.55
70	PWB-285	500	70.70
95	PWB-286	500	83.45
120	PWB-287	300	115.90
150	PWB-288	200	148.50
185	PWB-289	200	198.65
225	PWB-290	100	255.31
240	PWB-291	100	291.65
300	PWB-292	100	418.42
400	PWB-293	50	552.18
500	PWB-294	50	736.56
630	PWB-295	50	1,001.71



**PIONEER**  
PPI

ALUMINIUM  
TUBULAR  
TERMINALS  
(PAS)



MM <sup>2</sup>	CAT NO	STANDING PACKING	RATE PER PCS.
2.5-3.2	PAS-151	2000	1.61
2.5-3.7	PAS-309	2000	1.73
4-4.2	PAS-155	2000	1.61
4-5.1	PAS-317	2000	2.02
6-5.2	PAS-158	2000	1.82
6-6.5	PAS-313	2000	2.02
10-4.2	PAS-159	1000	1.87
10-6.4	PAS-214	1000	2.61
10-8.2	PAS-215	1000	2.61
16-8.4	PAS-252	1000	3.14
16-8.2	PAS-216	1000	2.96
16-10.2	PAS-217	1000	3.01
25-6.4	PAS-253	500	3.94
25-8.2	PAS-218	500	3.94
25-10.2	PAS-219	500	3.94
25-12.7	PAS-220	500	3.94
35-6.4	PAS-254	500	5.20
35-8.2	PAS-221	500	5.20
35-10.2	PAS-222	500	5.20
50-8.2	PAS-255	200	7.89
50-10.2	PAS-312	200	7.89
50-12.7	PAS-224	200	7.89
70-8.2	PAS-256	200	11.81
70-10.2	PAS-225	200	11.81
70-12.7	PAS-226	200	11.81
95-10.2	PAS-227	100	13.04
95-12.7	PAS-228	100	13.04

MM <sup>2</sup>	CAT NO	STANDING PACKING	RATE PER PCS.
95-16.2	PAS-229	100	13.04
120-10.2	PAS-257	100	18.26
120-12.7	PAS-230	100	18.26
120-16.2	PAS-231	100	18.26
150-10.2	PAS-258	50	23.63
150-12.7	PAS-232	50	23.63
150-16.2	PAS-233	50	23.63
185-10.2	PAS-311	40	29.55
185-12.7	PAS-234	40	29.55
185-16.2	PAS-235	40	29.55
225-12.7	PAS-320	20	41.33
240-12.7	PAS-236	20	50.48
240-16.2	PAS-237	20	50.48
300-16.2	PAS-300	20	70.89
300-20.3	PAS-259	10	71.26
400-20.3	PAS-260	10	102.45
500-20.3	PAS-296	10	161.25
630-20.3	PAS-261	10	209.50
800	PAS-318	10	299.38
1000	PAS-319	10	495.36

**PPI**  
**PIONEER**

ALUMINIUM IN LINE  
CONNECTOR  
(PAC)



ALUMINIUM IN  
LINE CONNECTORS  
FOR XLPE  
CONDUCTORS  
(PAC XLPE)



MM <sup>2</sup>	CAT NO	STANDING PACKING	RATE PER PCS.
2.5	PAC-145	2000	1.32
2.5	PAC-06	2000	1.29
4	PAC-05	2000	1.29
6	PAC-13	2000	1.29
10	PAC-146	1000	1.49
10	PAC-14	1000	1.61
16	PAC-04	1000	2.18
25	PAC-03	100	3.36
35	PAC-02	100	4.01
50	PAC-12	100	5.99
70	PAC-01	50	9.85
95	PAC-15	50	11.11
120	PAC-09	40	15.08
150	PAC-10	40	19.85
185	PAC-11	40	26.10
225	PAC-147	40	35.46
240	PAC-16	20	40.74
300	PAC-17	20	59.22
400	PAC-18	20	85.96
500	PAC-19	10	131.85
630	PAC-20	10	175.17
800	PAC-148	10	242.52
1000	PAC-149	10	389.39

MM <sup>2</sup>	CAT NO	STANDING PACKING	RATE PER PCS.
25	PAC-XL1	500	6.68
35	PAC-XL2	500	9.44
50	PAC-XL3	200	14.78
70	PAC-XL4	200	20.28
95	PAC-XL5	100	28.14
120	PAC-XL6	100	35.47
150	PAC-XL7	50	47.27
185	PAC-XL8	50	69.53
225	PAC-XL9	40	83.89
240	PAC-XL10	20	99.88
300	PAC-XL11	20	128.40
400	PAC-XL12	20	256.04
500	PAC-XL13	20	256.04
630	PAC-XL14	20	355.37
800	PAC-XL15	20	486.12
1000	PAC-XL16	20	738.53



**PIONEER**  
PPI

ALUMINIUM  
REDUCER  
TERMINALS  
(PAR)



MM <sup>2</sup>	CAT NO	STANDING PACKING	RATE PER PCS.
2.5	PAR-1	1000	4.98
2.5	PAR-7	1000	4.65
4	PAR-15	1000	4.98
4	PAR-16	1000	4.65
6	PAR-17	1000	5.27
6	PAR-18	1000	4.65
10	PAR-19	500	6.33
10	PAR-20	500	5.66
10	PAR-21	500	7.01
10	PAR-22	500	6.51
16	PAR-23	500	12.35
16	PAR-24	500	12.35
16	PAR-2	500	8.90
25	PAR-25	500	14.20
25	PAR-3	500	18.67
35	PAR-4	500	18.67
50	PAR-26	200	20.71
50	PAR-5	200	35.08
70	PAR-27	200	31.84
70	PAR-6	200	40.74
70	PAR-28	200	48.80
95	PAR-29	100	46.75
95	PAR-8	100	65.42
95	PAR-31	100	42.96
95	PAR-32	100	68.99
120	PAR-33	100	57.03
120	PAR-34	100	56.51

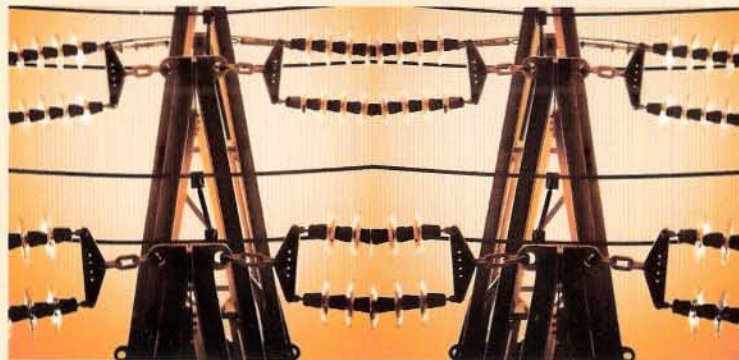
MM <sup>2</sup>	CAT NO	STANDING PACKING	RATE PER PCS.
120	PAR-35	100	65.42
120	PAR-36	100	88.19
150	PAR-10	50	103.07
150	PAR-37	50	80.13
185	PAR-30	50	131.71
185	PAR-38	50	105.31
225	PAR-39	50	172.81
225	PAR-46	50	248.13
225	PAR-42	50	219.34
240	PAR-44	40	226.03
240	PAR-43	40	165.25
300	PAR-45	20	209.29
300	PAR-47	20	223.83



ALUMINIUM  
TERMINALS  
FOR XLPE  
CONDUCTORS  
(PAS XLPE)



MM <sup>2</sup>	CAT NO	STANDING PACKING	RATE PER PCS.
25	PAS-XL17	500	6.12
35	PAS-XL18	500	8.97
50	PAS-XL19	200	13.94
70	PAS-XL20	200	18.26
95	PAS-XL21	100	27.59
120	PAS-XL22	100	35.43
150	PAS-XL23	50	50.88
185	PAS-XL24	50	68.06
225	PAS-XL25	40	84.67
240	PAS-XL26	20	94.49
300	PAS-XL27	20	123.50
400	PAS-XL28	20	196.90
500	PAS-XL29	20	273.93
630	PAS-XL30	20	392.23
800	PAS-XL31	20	529.76
1000	PAS-XL32	20	733.82



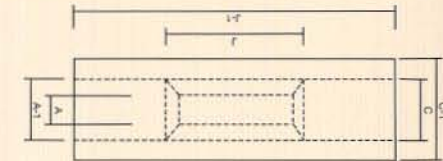
An ISO 9001:2008 Certified Company

ALUMINIUM TUBE  
TERMINALS  
TWO HOLES  
(PAS DH)



MM <sup>2</sup>	CAT NO	STANDING PACKING	RATE PER PCS.
150	PAS-701	50	59.85
240	PAS-702	50	103.82
300	PAS-703	20	157.47
300	PAS-704	20	157.47
300	PAS-705	20	166.12
630	PAS-706	20	405.84

INSULATED IN-LINE  
CONNECTORS



MM <sup>2</sup>	CAT NO	STANDING PACKING	RATE PER PCS.
1.5	PCI-463	2000	2.65
2.5	PCI-464	2000	3.16
4-6	PCI-465	2000	4.60

www.pioneerpowers.com

**PIONEER**  
**PP1**

ALUMINIUM TUBE  
TERMINALS  
LONG BARREL  
(PAS LB)



**PPI**  
**PIONEER**

MM <sup>2</sup>	CAT NO	STANDING PACKING	RATE PER PCS.
2.5	PAS-551	1000	2.15
2.5	PAS-509	1000	2.24
4.0	PAS-555	1000	2.15
4.0	PAS-517	1000	2.39
6.0	PAS-558	1000	2.39
6.0	PAS-513	1000	2.39
10	PAS-514	1000	2.93
10	PAS-515	1000	2.93
16	PAS-552	1000	3.78
16	PAS-513	1000	3.59
16	PAS-517	1000	3.78
25	PAS-518	500	4.44
25	PAS-519	500	4.44
25	PAS-520	500	4.44
35	PAS-521	500	6.16
35	PAS-522	500	6.16
50	PAS-655	200	9.41
50	PAS-512	200	9.84
50	PAS-524	200	9.41
70	PAS-556	100	14.41
70	PAS-525	100	14.41
70	PAS-526	100	14.41
95	PAS-527	50	15.77
95	PAS-528	50	15.77
95	PAS-529	50	15.77
120	PAS-557	50	22.09
120	PAS-530	50	22.09

MM <sup>2</sup>	CAT NO	STANDING PACKING	RATE PER PCS.
120	PAS-531	50	22.09
150	PAS-658	40	28.76
150	PAS-532	40	28.76
150	PAS-533	40	28.76
185	PAS-511	40	34.97
185	PAS-534	40	34.97
185	PAS-535	40	34.97
225	PAS-620	40	50.16
240	PAS-536	40	61.16
240	PAS-537	40	61.16
300	PAS-500	40	89.16
300	PAS-559	40	85.28
400	PAS-560	20	124.51
500	PAS-596	20	179.29
630	PAS-561	20	235.64
800	PAS-618	20	334.64
1000	PAS-619	20	546.13

## SNAP ON TERMINALS (PSNP)



MM <sup>2</sup>	CAT NO	STANDING PACKING	RATE PER PCS.
1	PSNP-8368	2000	1.94
1	PSNP-8369	2000	10.25
1.5	PSNP-8360	2000	4.42
1.5	PSNP-8361	2000	5.06
1.5	PSNP-8351	2000	2.86
1.5	PSNP-8352	2000	3.92
1.5	PSNP-8358	2000	2.33
1.5	PSNP-8324	2000	1.22
1.5	PSNP-8325	2000	3.55
1.5	PSNP-8354	2000	1.76
1.5	PSNP-8355	2000	3.00
1.5	PSNP-8336	2000	2.03
1.5	PSNP-8353	2000	3.33
1.5	PSNP-8356	2000	2.03
1.5	PSNP-8357	2000	2.97
1.5	PSNP-8362	2000	3.95
1.5	PSNP-8364	2000	2.82
1.5	PSNP-8367	2000	12.77
1.5	PSNP-8661	2000	4.47
2.5	PSNP-8245	2000	5.53
2.5	PSNP-8331	2000	3.95
2.5	PSNP-8347	2000	2.86
2.5	PSNP-8348	2000	4.28
2.5	PSNP-8349	2000	2.86
2.5	PSNP-8350	2000	4.09
2.5	PSNP-8363	2000	4.82
2.5	PSNP-8365	2000	7.57

MM <sup>2</sup>	CAT NO	STANDING PACKING	RATE PER PCS.
2.5	PSNP-8366	2000	7.57
2.5	PSNP-8473	2000	6.88
2.5	PSNP-8474	2000	7.06
2.5	PSNP-8475	2000	7.06
2.5	PSNP-8477	2000	9.41
2.5	PSNP-8214	2000	2.99
2.5	PSNP-8346	2000	5.09
1.2	PSNP-8693	2000	3.22
1.2	PSNP-8694	2000	2.15
1.2	PSNP-8695	2000	2.15
1.2	PSNP-8697	2000	1.40
4	PSNP-8476	1000	6.63



**PIONEER**  
PPI

COPPER RING  
TONGUE  
TERMINAL ENDS  
(PR)



MM <sup>2</sup>	CAT NO	STANDING PACKING	RATE PER PCS.
1.5-2	PR-7103	2000	2.22
1.5-3	PR-7001	2000	2.07
1.5-3.5	PR-7002	2000	2.07
1.5-4	PR-7003	2000	1.84
1.5-3	PR-7153	2000	2.22
1.5-3.5	PR-7048	2000	1.84
1.5-4	PR-7049	2000	1.84
1.5-4	PR-7154	2000	2.16
1.5-3	PR-7104	2000	2.44
1.5-4	PR-7004	2000	1.82
1.5-5	PR-7005	2000	1.82
1.5-4	PR-7105	2000	2.44
1.5-5	PR-7006	2000	2.36
1.5-6	PR-7007	2000	2.29
1.5-6	PR-7106	2000	2.44
2.5-3	PR-7107	2000	2.07
2.5-3.5	PR-7008	2000	2.11
2.5-3.5	PR-7108	2000	2.10
2.5-4	PR-7009	2000	1.82
2.5-5	PR-7010	2000	1.82
2.5-5	PR-7109	2000	1.87
2.5-6	PR-7011	2000	1.87
2.5-5	PR-7110	2000	2.81
2.5-6	PR-7012	2000	2.59
2.5-8	PR-7013	2000	2.97
2.5-6	PR-7111	2000	4.43
2.5-8	PR-7014	2000	3.67

MM <sup>2</sup>	CAT NO	STANDING PACKING	RATE PER PCS.
2.5-10	PR-7015	2000	4.22
2.5-10	PR-7151	2000	4.13
2.5-12	PR-7047	2000	5.04
4.6-4	PR-7155	2000	3.30
4.6-5	PR-7050	2000	3.30
4.6-4	PR-7112	2000	4.84
4.6-5	PR-7016	2000	3.99
4.6-5	PR-7157	2000	8.94
4.6-5	PR-7113	2000	4.16
4.6-6	PR-7017	2000	3.36
4.6-8	PR-7018	2000	3.99
4.6-5	PR-7114	2000	5.62
4.6-6	PR-7019	2000	4.47
4.6-6	PR-7115	2000	4.90
4.6-8	PR-7020	2000	5.13
4.6-9.5	PR-7021	2000	6.14
4.6-8	PR-7116	2000	6.18
4.6-10	PR-7022	2000	7.41
4.6-8	PR-7117	2000	6.79
4.6-10	PR-7023	2000	5.74
4.6-12	PR-7024	2000	5.74
10-4	PR-7118	1000	5.58
10-5	PR-7025	1000	4.59
10-4	PR-7119	1000	5.16
10-5	PR-7026	1000	4.25
10-6	PR-7120	1000	4.46
10-8	PR-7121	1000	5.90

An ISO 9001:2008 Certified Company

[www.pioneerpowers.com](http://www.pioneerpowers.com)

COPPER RING  
TONGUE  
TERMINAL ENDS  
(PR)



MM <sup>2</sup>	CAT NO	STANDING PACKING	RATE PER PCS.
10-8	PR-7122	1000	11.08
10-10	PR-7027	1000	11.19
10-10	PR-7123	1000	8.12
10-12	PR-7028	1000	8.22
16-5	PR-7124	1000	7.28
16-5	PR-7125	1000	9.73
16-6	PR-7029	1000	8.41
16-6	PR-7126	1000	9.73
16-8	PR-7030	1000	8.49
16-9.5	PR-7031	1000	10.07
16-8	PR-7127	1000	16.01
16-10	PR-7032	1000	15.37
16-10	PR-7128	1000	12.74
16-12	PR-7033	300	11.27
25-6	PR-7156	300	14.53
25-8	PR-7051	300	18.34
25-6	PR-7129	300	18.10
25-8	PR-7034	300	15.71
25-10	PR-7035	300	18.80
25-6	PR-7130	300	25.12
25-8	PR-7036	300	26.10
25-10	PR-7131	300	27.46
25-10	PR-7132	300	24.00
25-12	PR-7037	300	23.02
35-6	PR-7133	300	19.07
35-8	PR-7038	300	19.59
35-8	PR-7134	300	35.75

MM <sup>2</sup>	CAT NO	STANDING PACKING	RATE PER PCS.
35-10	PR-7039	300	34.20
35-10	PR-7135	300	28.82
35-12	PR-7040	300	26.41
50-8	PR-7136	100	28.44
50-10	PR-7041	100	44.92
50-10	PR-7137	100	31.14
50-10	PR-7138	100	40.75
50-12	PR-7042	100	36.34
50-16	PR-7139	100	42.63
70-10	PR-7140	100	43.20
70-12	PR-7043	100	50.47
70-12	PR-7141	100	41.48
70-16	PR-7142	100	43.02
95-10	PR-7143	50	64.82
95-10	PR-7144	50	59.44
95-12	PR-7044	50	55.58
95-16	PR-7145	50	60.56
120-12	PR-7146	50	70.82
120-16	PR-7147	50	94.80
120-20	PR-7148	50	107.72
150-12	PR-7149	50	165.69
150-16	PR-7045	50	172.90
150-16	PR-7150	50	216.34
150-20	PR-7046	50	179.85

**PIONEER**  
PPI

COPPER RING  
TONGUE INSULATED  
(PRI)



MM <sup>2</sup>	CAT NO	STANDING PACKING	RATE PER PCS.
1.5-2	PRI-7052	2000	3.79
1.5-3	PRI-7054	2000	2.52
1.5-3.5	PRI-7055	2000	2.52
1.5-4	PRI-7056	2000	2.52
1.5-3	PRI-7057	2000	3.48
1.5-3.5	PRI-7058	2000	2.76
1.5-4	PRI-7059	2000	2.76
1.5-3	PRI-7060	2000	3.80
1.5-4	PRI-7061	2000	2.08
1.5-5	PRI-7062	2000	2.08
1.5-4	PRI-7063	2000	2.52
1.5-4	PRI-7064	2000	2.52
1.5-5	PRI-7065	2000	3.22
1.5-6	PRI-7066	2000	3.02
1.5-6	PRI-7067	2000	3.22
2.5-3	PRI-7068	2000	2.76
2.5-3.5	PRI-7069	2000	2.76
2.5-3.5	PRI-7070	2000	3.02
2.5-4	PRI-7071	2000	2.62
2.5-5	PRI-7072	2000	2.62
2.5-5	PRI-7073	2000	2.85
2.5-6	PRI-7074	2000	2.85
2.5-5	PRI-7075	2000	3.80
2.5-6	PRI-7076	2000	3.29
2.5-8	PRI-7077	2000	3.49
2.5-6	PRI-7078	2000	6.29
2.5-8	PRI-7079	2000	4.25

MM <sup>2</sup>	CAT NO	STANDING PACKING	RATE PER PCS.
2.5-10	PRI-7080	2000	6.29
2.5-10	PRI-7081	2000	4.87
2.5-12	PRI-7082	2000	7.28
4.6-4	PRI-7083	1000	4.25
4.6-5	PRI-7084	1000	4.25
4.6-4	PRI-7085	1000	7.28
4.6-5	PRI-7086	1000	4.87
4.6-5	PRI-7087	1000	10.02
4.6-5	PRI-7088	1000	6.91
4.6-6	PRI-7089	1000	4.22
4.6-8	PRI-7090	1000	4.87
4.6-5	PRI-7091	1000	8.04
4.6-6	PRI-7092	1000	5.37
4.6-6	PRI-7093	1000	5.91
4.6-8	PRI-7094	1000	5.91
4.6-9.5	PRI-7095	1000	8.79
4.6-8	PRI-7096	1000	7.01
4.6-10	PRI-7097	1000	10.43
4.6-8	PRI-7098	1000	9.69
4.6-10	PRI-7099	1000	6.46
4.6-12	PRI-7100	1000	6.46

**PRI**  
**PIONEER**

COPPER RING  
TONGUE  
REINFORCED  
(PRR)



MM <sup>2</sup>	CAT NO	STANDING PACKING	RATE PER PCS.
1.5-2	PRR-7435	2000	4.93
1.5-3	PRR-7437	2000	2.88
1.5-3.5	PRR-7438	2000	2.88
1.5-4	PRR-7439	2000	2.88
1.5-3	PRR-7440	2000	4.53
1.5-3.5	PRR-7441	2000	2.88
1.5-4	PRR-7442	2000	2.88
1.5-3	PRR-7443	2000	4.80
1.5-4	PRR-7444	2000	2.73
1.5-5	PRR-7445	2000	2.73
1.5-4	PRR-7446	2000	3.12
1.5-4	PRR-7447	2000	5.17
1.5-5	PRR-7448	2000	3.35
1.5-6	PRR-7449	2000	3.35
1.5-6	PRR-7450	2000	3.55
2.5-3	PRR-7451	2000	3.35
2.5-3.5	PRR-7452	2000	3.35
2.5-3.5	PRR-7453	2000	3.38
2.5-4	PRR-7454	2000	2.95
2.5-5	PRR-7455	2000	2.95
2.5-5	PRR-7456	2000	2.95
2.5-6	PRR-7457	2000	2.95
2.5-5	PRR-7458	2000	4.16
2.5-6	PRR-7459	2000	3.63
2.5-8	PRR-7460	2000	4.15
2.5-6	PRR-7461	2000	7.50
2.5-8	PRR-7462	2000	4.83

MM <sup>2</sup>	CAT NO	STANDING PACKING	RATE PER PCS.
2.5-10	PRR-7463	2000	7.50
2.5-10	PRR-7464	2000	5.43
2.5-12	PRR-7465	2000	8.46
4.6-4	PRR-7466	1000	5.12
4.6-5	PRR-7467	1000	5.12
4.6-4	PRR-7468	1000	9.11
4.6-5	PRR-7469	1000	5.84
4.6-5	PRR-7470	1000	11.90
4.6-5	PRR-7471	1000	8.75
4.6-6	PRR-7472	1000	4.86
4.6-8	PRR-7473	1000	5.62
4.6-5	PRR-7474	1000	9.92
4.6-6	PRR-7475	1000	6.36
4.6-6	PRR-7476	1000	6.86
4.6-8	PRR-7477	1000	6.86
4.6-9.5	PRR-7478	1000	10.76
4.6-8	PRR-7479	1000	7.85
4.6-10	PRR-7480	1000	12.25
4.6-8	PRR-7481	1000	11.53
4.6-10	PRR-7482	1000	7.38
4.6-12	PRR-7483	1000	7.38

**PIONEER**  
PPI

COPPER FORK TYPE  
(PF)



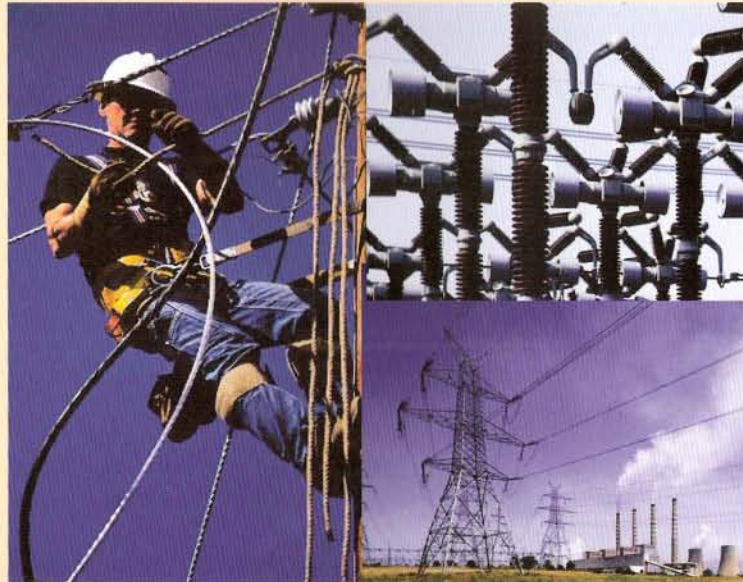
MM <sup>2</sup>	CAT NO	STANDING PACKING	RATE PER PCS.
1.5	PF-7214	2000	4.03
1.5	PF-7249	2000	1.42
1.5	PF-7250	2000	2.76
2.5	PF-7251	2000	1.55
2.5	PF-7280	2000	4.44
4-6	PF-7252	2000	2.82
4-6	PF-7253	2000	2.82
10	PF-7254	1000	9.19
10	PF-7255	1000	9.19

COPPER FORK TYPE  
INSULATED  
(PFI)



MM <sup>2</sup>	CAT NO	STANDING PACKING	RATE PER PCS.
1.5	PFI-7925	2000	4.76
1.5	PFI-7926	2000	1.84
1.5	PFI-7927	2000	3.48
2.5	PFI-7928	2000	2.13
2.5	PFI-7929	2000	5.23
4-6	PFI-7930	1000	3.63
4-6	PFI-7931	1000	3.63
10	PFI-7932	1000	11.21
10	PFI-7933	1000	11.21

PPI  
PIONEER



COPPER FORK TYPE  
REINFORCED  
(PFR)

MM <sup>2</sup>	CAT NO	STANDING PACKING	RATE PER PCS.
1.5	PFR-7934	2000	5.81
1.5	PFR-7935	2000	2.42
1.5	PFR-7936	2000	4.53
2.5	PFR-7937	2000	2.85
2.5	PFR-7938	2000	6.45
4-6	PFR-7939	2000	4.69
4-6	PFR-7940	2000	4.69
10	PFR-7941	2000	13.66
10	PFR-7942	2000	13.66

COPPER PIN TYPE  
TERMINALS  
(PP)



COPPER PIN TYPE  
INSULATED  
(PPI)



MM <sup>2</sup>	CAT NO	STANDING PACKING	RATE PER PCS.
0.75	PP-33	2000	2.20
1	PP-34	2000	1.84
1.5	PP-9	2000	1.60
1.5	PP-35	2000	1.96
2.5	PP-1	2000	1.60
2.5	PP-2	2000	1.60
4	PP-3	2000	3.02
4	PP-4	2000	6.36
6	PP-5	2000	3.28
6	PP-6	2000	6.36
10	PP-7	1000	5.36
16	PP-8	500	7.86
25	PP-125	200	27.20
35	PP-135	200	36.04
50	PP-150	100	43.92
70	PP-170	100	67.72
95	PP-195	50	84.26

MM <sup>2</sup>	CAT NO	STANDING PACKING	RATE PER PCS.
1.5	PPI-17	2000	2.10
1.5	PPI-40	2000	2.50
2.5	PPI-18	2000	2.25
2.5	PPI-19	2000	2.25
4	PPI-20	2000	3.86
4	PPI-21	2000	9.22
6	PPI-22	1000	9.22
6	PPI-23	1000	9.22
10	PPI-24	500	15.17
10	PPI-25	300	24.35



TYPE I



TYPE II



TYPE III



COPPER PIN TYPE  
REINFORCED  
(PPR)

MM <sup>2</sup>	CAT NO	STANDING PACKING	RATE PER PCS.
1.5	PPR-26	2000	2.65
2.5	PPR-27	2000	2.88
2.5	PPR-28	2000	2.88
4	PPR-29	1000	4.72
4	PPR-30	1000	12.32
6	PPR-31	1000	12.75
6	PPR-32	1000	12.75

PIONEER<sup>®</sup>  
PPI

COPPER RING TONGUE  
FORK TERMINALS  
"U" CUT  
(PRFU)



COPPER RING TONGUE  
FORK TERMINALS END  
"U" CUT INSULATED  
(PRFUI)



MM <sup>2</sup>	CAT NO	STANDING PACKING	RATE PER PCS.
1.5-3.1	PRFU-7235	2000	2.53
1.5-4.1	PRFU-7236	2000	2.80
1.5-4.1	PRFU-7237	2000	3.12
1.5-5.1	PRFU-7238	2000	2.53
1.5-3.6	PRFU-7240	2000	2.53
1.5-3.1	PRFU-7241	2000	2.53
1.5-3.6	PRFU-7244	2000	3.12
1.5-6.1	PRFU-7861	2000	2.80
2.2-3.1	PRFU-7862	2000	2.80
2.5-3.6	PRFU-7863	2000	2.93
2.5-3.1	PRFU-7864	2000	2.93
2.5-4.1	PRFU-7239	2000	2.93
2.5-5.1	PRFU-7242	2000	2.93
4-6-4.1	PRFU-7243	2000	6.25
4-6-4.1	PRFU-7245	2000	5.39
4-6-5.1	PRFU-7246	2000	5.39
4-6-5.1	PRFU-7247	2000	6.25
4-6-6.1	PRFU-7248	2000	6.25
10-4.1	PRFU-7865	1000	6.25
10-5.1	PRFU-7866	1000	6.25
10-6.1	PRFU-7867	1000	6.92
10-8.1	PRFU-7868	1000	7.99
16-5.1	PRFU-7869	1000	9.82
16-6.1	PRFU-7870	500	10.94
16-8.1	PRFU-7871	500	10.94
16-8.1	PRFU-7872	500	13.28

MM <sup>2</sup>	CAT NO	STANDING PACKING	RATE PER PCS.
1.5-3.1	PRFUI-7873	2000	3.29
1.5-3.6	PRFUI-7874	2000	3.29
1.5-3.1	PRFUI-7875	2000	3.22
1.5-3.6	PRFUI-7876	2000	3.35
1.5-4.1	PRFUI-7877	2000	3.70
1.5-4.1	PRFUI-7878	2000	3.70
1.5-5.1	PRFUI-7879	2000	4.05
1.5-6.1	PRFUI-7880	2000	4.05
2.5-3.1	PRFUI-7881	2000	3.83
2.5-3.6	PRFUI-7882	2000	3.82
2.5-3.1	PRFUI-7883	2000	3.98
2.5-4.1	PRFUI-7884	2000	3.98
2.5-5.1	PRFUI-7885	2000	3.98
2.5-6.1	PRFUI-7886	2000	6.03
4-6-4.1	PRFUI-7887	2000	7.29
4-6-4.1	PRFUI-7888	2000	7.29
4-6-5.1	PRFUI-7889	2000	7.93
4-6-6.1	PRFUI-7890	2000	7.93
10-4.1	PRFUI-7891	1000	9.31
10-5.1	PRFUI-7892	1000	9.31
10-6.1	PRFUI-7893	1000	10.56
10-8.1	PRFUI-7894	1000	12.38
16-5.1	PRFUI-7895	500	12.38
16-6.1	PRFUI-7896	500	13.49
16-8.1	PRFUI-7897	500	13.49
16-8.1	PRFUI-7898	500	19.55

**PPI**  
**PIONEER**

COPPER RING TONGUE  
FORK TERMINALS END  
"U" CUT INSULATED  
WITH REINFORCED  
(PRFUR)



OPEN-CLOSE TYPE  
SOLDERING CABLE  
TERMINALS ENDS  
(POC)



MM <sup>2</sup>	CAT NO	STANDING PACKING	RATE PER PCS.
1.5-3.1	PRFUR-7899	2000	4.12
1.5-3.6	PRFUR-7900	2000	4.12
1.5-3.1	PRFUR-7901	2000	4.12
1.5-3.6	PRFUR-7902	2000	4.12
1.5-4.1	PRFUR-7903	2000	4.36
1.5-4.1	PRFUR-7904	2000	4.36
1.5-5.1	PRFUR-7905	2000	4.70
1.5-6.1	PRFUR-7906	2000	4.70
2.5-3.1	PRFUR-7907	2000	4.70
2.5-3.6	PRFUR-7908	2000	4.70
2.5-3.1	PRFUR-7909	2000	4.78
2.5-4.1	PRFUR-7910	2000	4.78
2.5-5.1	PRFUR-7911	2000	4.78
2.5-6.1	PRFUR-7912	2000	7.31
4-6-4.1	PRFUR-7913	2000	8.28
4-6-4.1	PRFUR-7914	2000	8.28
4-6-5.1	PRFUR-7915	2000	9.02
4-6-6.1	PRFUR-7916	2000	9.02
10-4.1	PRFUR-7917	1000	10.32
10-5.1	PRFUR-7918	1000	10.32
10-6.1	PRFUR-7919	1000	11.02
10-8.1	PRFUR-7920	1000	12.11
16-5.1	PRFUR-7921	500	14.84
16-6.1	PRFUR-7922	500	26.16
16-8.1	PRFUR-7923	500	26.86
16-8.1	PRFUR-7924	500	28.04

MM <sup>2</sup>	CAT NO	STANDING PACKING	RATE PER PCS.
1.5-4	POC-371	2000	1.44
1.5-3.5	POC-345	2000	1.22
2.5-5	POC-372	2000	2.00
2.5-5	POC-344	2000	1.70
4-5	POC-373	2000	3.04
6-6	POC-374	2000	4.26
10-6	POC-375	1000	5.56
16-8	POC-376	1000	9.78
25-8	POC-377	500	17.22
35-8	POC-378	500	22.40
50-10	POC-379	300	38.54
70-10	POC-380	200	59.62
95-12	POC-381	200	108.05
120-12	POC-382	100	139.01
150-12	POC-383	100	187.08
185-16	POC-384	50	266.45
225-16	POC-385	50	338.66
240-16	POC-386	40	410.46
300-20	POC-387	40	544.76
400-20	POC-388	20	809.62
500-20	POC-389	20	939.37
625-20	POC-390	20	1,128.79

**PIONEER**  
PPI

COPPER FORK HOOK  
TERMINAL ENDS  
(PFH)



COPPER FORK HOOK  
TERMINAL ENDS  
INSULATED  
(PFHI)



MM <sup>2</sup>	CAT NO	STANDING PACKING	RATE PER PCS.
1.5-2.3	PFH-7279	2000	3.80
1.5-2.3	PFH-7278	2000	3.16
1.5-4.1	PFH-7266	2000	7.28
1.5-3.6	PFH-7256	2000	3.36
1.5-5.1	PFH-7257	2000	3.80
1.5-6.3	PFH-7270	2000	4.33
1.5-8.1	PFH-7271	2000	4.33
2.5-3.6	PFH-7258	2000	4.33
2.5-4.1	PFH-7259	2000	3.80
2.5-5.1	PFH-7260	2000	3.80
2.5-6.3	PFH-7272	2000	5.08
2.5-8.1	PFH-7273	2000	5.08
4-4.1	PFH-7274	1000	8.31
4-5.1	PFH-7275	1000	8.31
4-6.3	PFH-7276	1000	8.31
4-8.3	PFH-7277	1000	8.31
4-6-4.1	PFH-7261	1000	6.95
4-6-5.1	PFH-7262	1000	6.95
4-6-5.1	PFH-7263	1000	6.95
4-6-4.1	PFH-7268	1000	5.72
4-6-5.1	PFH-7269	1000	5.72
6-4.1	PFH-7264	500	6.95
6-4.1	PFH-7267	500	7.28

MM <sup>2</sup>	CAT NO	STANDING PACKING	RATE PER PCS.
1.5-2.3	PFHI-7944	2000	3.99
1.5-2.3	PFHI-7945	2000	4.33
1.5-4.1	PFHI-7946	2000	4.33
1.5-3.6	PFHI-7947	2000	4.33
1.5-5.1	PFHI-7948	2000	3.32
1.5-6.3	PFHI-7949	2000	5.15
1.5-8.1	PFHI-7950	2000	5.15
2.5-3.6	PFHI-7951	2000	5.33
2.5-4.1	PFHI-7952	2000	4.78
2.5-5.1	PFHI-7953	2000	4.78
2.5-6.3	PFHI-7954	2000	6.07
2.5-8.1	PFHI-7955	2000	6.07
4-4.1	PFHI-7956	1000	9.95
4-5.1	PFHI-7957	1000	9.95
4-6.3	PFHI-7958	1000	9.95
4-8.3	PFHI-7959	1000	9.57
4-6-4.1	PFHI-7960	1000	8.07
4-6-5.1	PFHI-7961	1000	8.07
4-6-5.1	PFHI-7962	1000	8.07
4-6-4.1	PFHI-7963	1000	6.71
4-6-5.1	PFHI-7964	1000	6.71
6-4.1	PFHI-7965	500	8.95
6-4.1	PFHI-7966	500	8.95

**PPI**  
**PIONEER**

**COPPER FORK HOOK  
TERMINAL ENDS  
REINFORCED  
(PFHR)**



**TWIN CORD END  
TERMINALS (PTW)**



MM <sup>2</sup>	CAT NO	STANDING PACKING	RATE PER PCS.
1.5-2.3	PFHR-7968	2000	4.99
1.5-2.3	PFHR-7969	2000	4.99
1.5-4.1	PFHR-7970	2000	5.33
1.5-3.6	PFHR-7971	2000	5.33
1.5-5.1	PFHR-7972	2000	4.33
1.5-6.3	PFHR-7973	2000	6.15
1.5-8.1	PFHR-7974	2000	6.15
2.5-3.6	PFHR-7975	2000	6.56
2.5-4.1	PFHR-7976	2000	6.01
2.5-5.1	PFHR-7977	2000	6.01
2.5-6.3	PFHR-7978	2000	7.30
2.5-8.1	PFHR-7979	2000	7.30
4-4.1	PFHR-7980	1000	11.70
4-5.1	PFHR-7981	1000	11.70
4-6.3	PFHR-7982	1000	11.70
4-8.3	PFHR-7983	1000	10.70
4-6-4.1	PFHR-7984	1000	9.30
4-6-5.1	PFHR-7985	1000	9.30
4-6-5.1	PFHR-7986	1000	9.30
4-6-4.1	PFHR-7987	1000	7.94
4.6-5.1	PFHR-7988	1000	7.94
6-4.1	PFHR-7989	500	10.97
6-4.1	PFHR-7990	500	11.26

MM <sup>2</sup>	CAT NO	STANDING PACKING	RATE PER PCS.
0.5	PTW-508L8	5000	1.89
0.75	PTW-509L8	5000	1.89
0.75	PTW-509L0	5000	1.96
1	PTW-510L8	5000	2.08
1	PTW-511L10	5000	2.15
1.5	PTW-512L8	5000	2.08
1.5	PTW-513L12	5000	2.08
2.5	PTW-514L10	2000	2.33
2.5	PTW-515L12	2000	2.40
4	PTW-517L12	1000	2.84
6	PTW-520L14	1000	2.84
10	PTW-522L14	500	5.50
16	PTW-525L14	500	6.26



**PIONEER**  
**PPI**

COPPER END  
SEALING FERRULES (PSF)



COPPER INSULA  
FERRULES (P



MM <sup>2</sup>	CAT NO	STANDING PACKING	RATE PER PCS.
0.5	PSF-508	5000	0.55
0.75	PSF-509	5000	0.55
1.0	PSF-510	5000	0.55
1.0	PSF-511	5000	0.70
1.5	PSF-512	5000	0.70
1.5	PSF-513	5000	0.76
2.5	PSF-514	5000	0.70
2.5	PSF-515	5000	0.83
4.0	PSF-516	5000	0.83
4.0	PSF-517	5000	0.97
6.0	PSF-518	5000	1.03
6.0	PSF-519	5000	1.10
6.0	PSF-520	5000	1.24
10	PSF-521	2000	1.38
10	PSF-522	2000	1.52
10	PSF-523	2000	1.66
16	PSF-524	2000	1.52
16	PSF-525	2000	1.66
16	PSF-526	2000	1.80
25	PSF-527	1000	2.41
35	PSF-528	1000	2.41
50	PSF-529	1000	3.25

MM <sup>2</sup>	CAT NO	STANDING PACKING	RATE PER PCS.
0.5	PSFI-508L6	6000	0.76
0.5	PSFI-508L8	6000	0.80
0.5	PSFI-508L10	6000	0.95
0.5	PSFI-508L12	6000	0.97
0.5	PSFI-508L15	6000	1.04
0.5	PSFI-508L18	6000	1.09
0.75	PSFI-509L6	5000	0.80
0.75	PSFI-509L8	5000	0.83
0.75	PSFI-509L10	5000	0.95
0.75	PSFI-509L12	5000	1.02
0.75	PSFI-509L15	5000	1.07
0.75	PSFI-509L18	5000	1.14
1.0	PSFI-510L6	5000	0.85
1.0	PSFI-510L8	5000	0.90
1.0	PSFI-511L10	5000	0.92
1.0	PSFI-511L12	5000	1.07
1.0	PSFI-511L15	5000	1.14
1.0	PSFI-511L18	5000	1.21
1.5	PSFI-512L6	5000	0.88
1.5	PSFI-512L8	5000	0.92
1.5	PSFI-513L10	5000	0.95
1.5	PSFI-513L12	5000	1.12
1.5	PSFI-513L15	5000	1.16
1.5	PSFI-513L18	5000	1.26

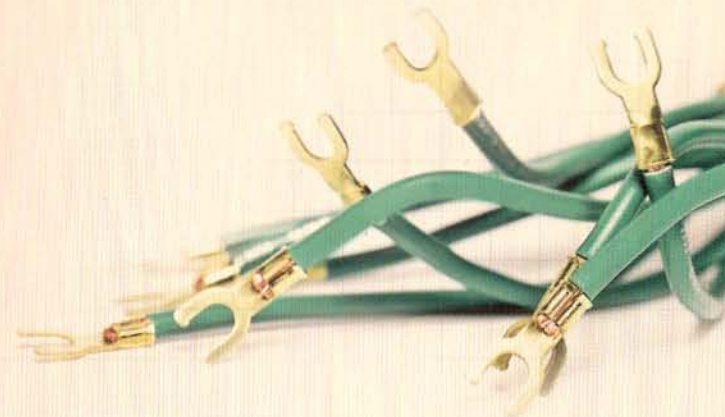
PPI  
PIONEER®

COPPER INSULATED  
FERRULES (PSFI)



MM <sup>2</sup>	CAT NO	STANDING PACKING	RATE PER PCS.
2.5	PSFI-514L8	5000	0.97
2.5	PSFI-514L10	5000	1.04
2.5	PSFI-515L12	5000	1.21
2.5	PSFI-515L15	5000	1.31
2.5	PSFI-515L18	5000	1.45
4	PSFI-516L8	3000	1.19
4	PSFI-516L10	3000	1.24
4	PSFI-516L12	3000	1.33
4	PSFI-516L15	3000	1.45
4	PSFI-516L18	3000	1.69
6	PSFI-518L10	1000	1.21
6	PSFI-519L12	1000	1.38
6	PSFI-519L15	1000	1.45
6	PSFI-520L18	1000	2.05
10	PSFI-521L10	1000	2.41
10	PSFI-521L12	1000	2.53
10	PSFI-523L15	1000	3.25
10	PSFI-523L18	1000	3.97
16	PSFI-524L10	600	2.53
16	PSFI-524L12	600	2.77
16	PSFI-524L15	600	3.37
16	PSFI-525L18	600	3.97

MM <sup>2</sup>	CAT NO	STANDING PACKING	RATE PER PCS.
25	PSFI-526L16	300	5.77
25	PSFI-526L20	300	6.97
35	PSFI-527L16	300	6.37
35	PSFI-527L20	300	8.77
50	PSFI-528L16	100	9.97
70	PSFI-529L20	100	12.37



**PIONEER**  
PPI

CORROSION INHIBITING  
COMPOUND FOR  
ELECTRICAL JOINTS  
(PGTZ-8785)



(PGTZ-8785) Rs.42.00  
Standard Packing - 200 Pcs.

REVERSE / FORWARD SWITCH

**PPI**  
**PIONEER**



16 Amp. Reverse / Forward Switch  
(Bakelite Handle) 1 Pc.- Rs.260.00

16 Amp. Reverse / Forward Switch  
(Steel Handle) 1 Pc.- Rs.280.00

Standard Packing 24 Pcs.

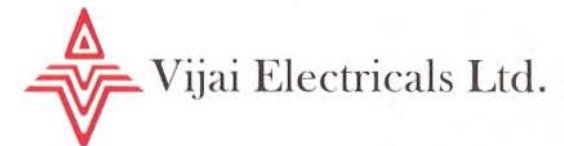


25 Amp. Reverse / Forward Switch  
(Bakelite Handle) 1 Pc.- Rs.600.00

32 Amp. Reverse / Forward Switch  
(Steel Handle) 1 Pc.- Rs.650.00

Standard Packing 15 Pcs.

LIST OF CUSTOMERS



# PIONEER POWER INTERNATIONAL

A WHOLE NEW DIMENSION IN QUALITY

PPI

**PIONEER**

An ISO 9001:2005-Certified Company

PIONEER POWER INTERNATIONAL

Manufacturing Unit

Gaja No 201/202/203/204, Laxmi Industries Estate,

Penkar Pada Road, Mira Road (East)

Thane - 401 104 INDIA

Tel No:- 0091 - 22 - 2896 6080 / 5645

Telefax : 0091 - 22 - 2896 2094

Email: [pioneerpower1@gmail.com](mailto:pioneerpower1@gmail.com)

Website: [www.pioneerpowers.com](http://www.pioneerpowers.com)

Dealer / Distributor

Terms & Condition

- 1) Prices are Subject to change without notice
- 2) All Goods will be supplied in standard Packing only
- 3) This Price List cancels all our prior price list.
- 4) Subject To Mumbai Jurisdiction.

PRICE LIST

